

Installation Instructions

5032XX Bolt-On Edge Padding Kit

by Progressive Sports Construction Group

Each Kit Consists of:

- 1 ea Molded Backboard Pad—Right Side
- 1 ea Molded Backboard Pad—Left Side
- 8 ea 1/4" -20 x 3" Zinc Plated Pan Phillips Head Machine Screw
- 8 ea 1/4" -20 x 1" Zinc Plated Pan Phillips Head Machine Screw
- 8 ea 1/4"-20 x 1" Zinc Pan Phillips Head Self Tapping Screw
- 8 ea 1/4"-20 Zinc Plated Hex Flange Lock Nut
- 1 ea Instruction Sheet

Tools Required

Phillips Head Screw Driver
Slotted Head Screw Driver
Utility Knife
Tape Measure

Tools Potentially Required

Drill with 9/32" or 7/32" Bit
Masking Tape
Center Punch

Installation

Note: The enclosed Molded Urethane Backboard Edge Pads have been designed with a molded-in goal relief designed to clear the bottom edge of the goal mounting plate. In situations where this relief is not required—i.e. if used on 48" backboards—it may be more aesthetically pleasing to mount the pads with the goal relief on the reverse side of the backboard.

- ① Use tape measure to mark the center line of the backboard.
- ② Place one of the edge pads in position on the backboard making sure it is lined up with mark you made in the center. If using with a backboard that is narrower than the normal 2 1/4" thick glass backboard, make sure pad is placed so it is flush with the face of the backboard.

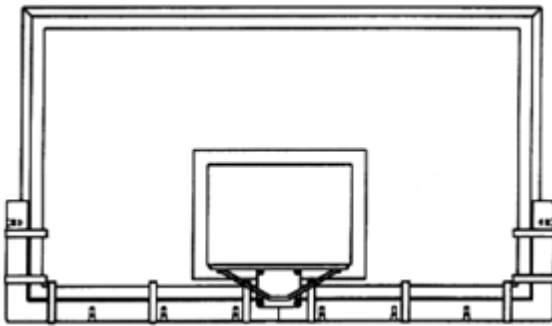


Figure 1

Note: It may be helpful to secure with masking tape (as shown in Fig. 1, above) to hold pad in place while completing following steps.

- ③ You may find it is necessary to trim or cut the pad to avoid items that may interfere with installation of the pad. Obstructions may be goal mounting plates, height adjuster bottom plates, etc. If trimming is necessary use a sharp utility knife to trim and remove all necessary urethane material to clear obstructions.

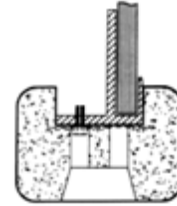


Figure 2

- ④ If being used with Progressive Glass backboards, or other backboards that are predrilled to accept bolt on edge padding, skip to step 7.
- ⑤ Mark locations for the holes to be drilled in the backboard using holes in molded pad as a guide. If using on a glass backboard, the holes should be drilled toward the rear of the backboard to avoid drilling into the glass. If using with a narrower backboard, choose the holes that will allow for the most backboard contact to allow for secure attachment.
- ⑥ Use a center punch to mark the center of the holes. This will keep drill in the center of the marked location. If using screws and nuts for attachment, use 9/32" drill bit to drill through the backboard at marked locations. If using self-tapping screws, use 7/32" drill bit to drill backboard at marked locations. Make sure to collect all shavings to avoid damage to the playing surface or player injury.
- ⑦ Select the hardware that best fits your installation and secure the first edge pad in place. Fit the second edge pad in place by repeating steps 2 thru 7.

Note: Promptly remove masking tape if used to hold pad in place during installation.

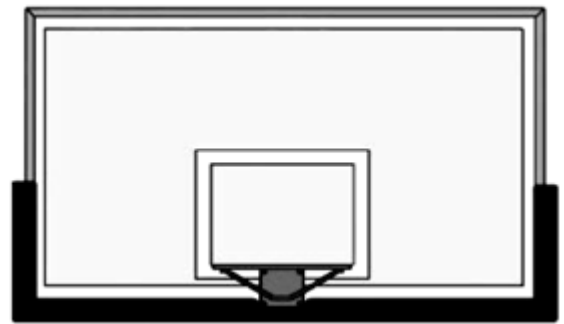


Figure 3

PROGRESSIVE
SPORTS CONSTRUCTION GROUP

765-987-7999
866-637-5611
411 S. Pearl St.
Spiceland IN 47385 USA
www.progressivescg.com