

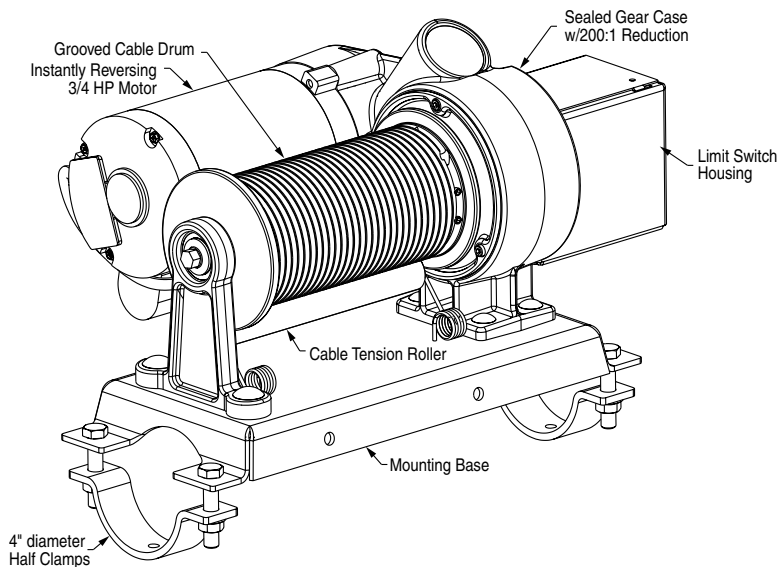
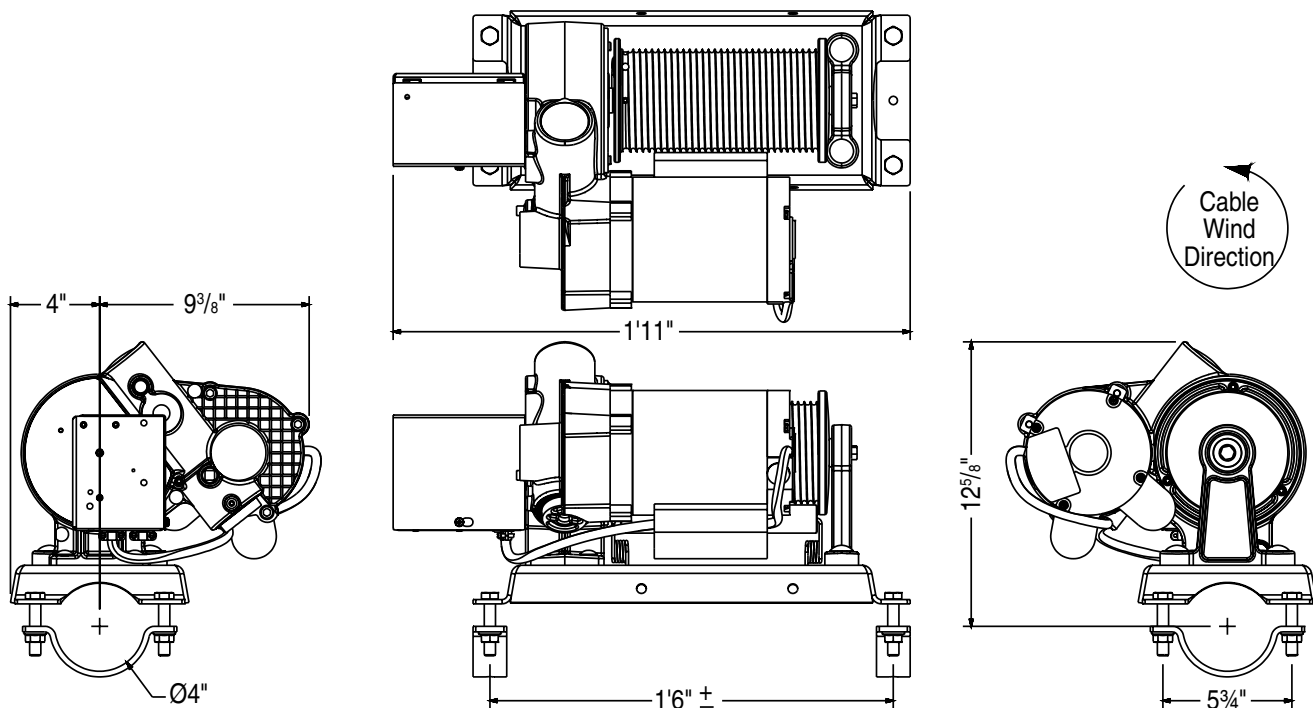
Backstop Winch

Motorized
Winch for use
with Basketball
Backstops

by



Winch Assembly Diagram/Mounting Options



765-987-7999
866-637-5611
411 S. Pearl St.
Spiceland IN 47385 USA
www.progressivescg.com

PROJECT: _____

ARCHITECT: _____

CONTRACTOR: _____

SUPPLIER: _____

DATE: _____ REVISED: _____

Backstop Winch

Motorized Winch for use with
Basketball Backstops



Page 2 of 2

Specifications—Backstop Winches

Backstop winches, model 503285/503280 Basketball Backstop Electric Winch by Progressive Sports Construction Group. Winch delivers 1250 pounds (566 Kg) of vertical line pull and is UL listed as a complete assembly.

Winch features a powerful ¾ HP, 115 volt, single phase, instant reverse motor with thermal overload protection that is governed to stall at 14 amps. Motor is rated at an intermittent 10 minute duty cycle. Winch motor operates at full load amperage rating of 11.5 full load amps. Winch has integral limit switches to stop travel in up and down positions.

Winch has an oil-bath gear case with precision ball bearings and premium seals for a lifetime of maintenance-free, leak free operation. Gear case features hardened steel gears that are securely captured to take on radial and thrust loads. Double worm gear reduction is in a ratio of 200:1 to provide exceptional holding power under load and eliminates the need for special or supplemental braking systems. Winch is specified to continuously run at the maximum rated load of 1250 lbs/ 566 kilograms for the motors rated duty cycle of 10 minutes without sustaining any gear damage.

Winch has a large 4 ½" diameter cable drum that is helically grooved to accept ¼" – 7 x 19 galvanized aircraft cable. Drum will accept up to 35' (10.7 meters) on a single layer and has a torsion spring tensioning roller to insure cable tracks properly into grooves, even if cable is allowed to go slack. Large diameter, grooves and tensioning spring provide long cable life and performance.

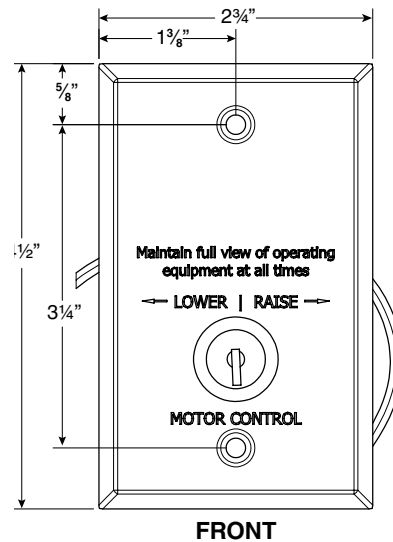
Winch can be mounted in any orientation that allows for correct wrap direction and unobstructed cable travel which provides extreme flexibility during installation.

Winch Assembly is covered by a five-year limited warranty and weighs just 68 lbs. (30.8 kilograms).

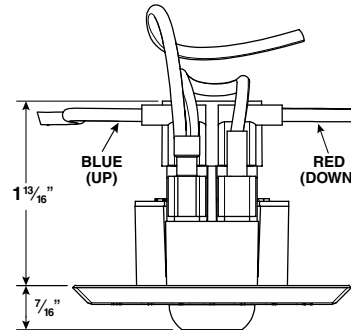
Please Select Winch

- ☐ Backstop Electric Winch with Single Gang Key Switch
- ☐ Backstop Electric Winch without key switch for use with controls systems, wireless remotes or ganged key switches

Key Switch

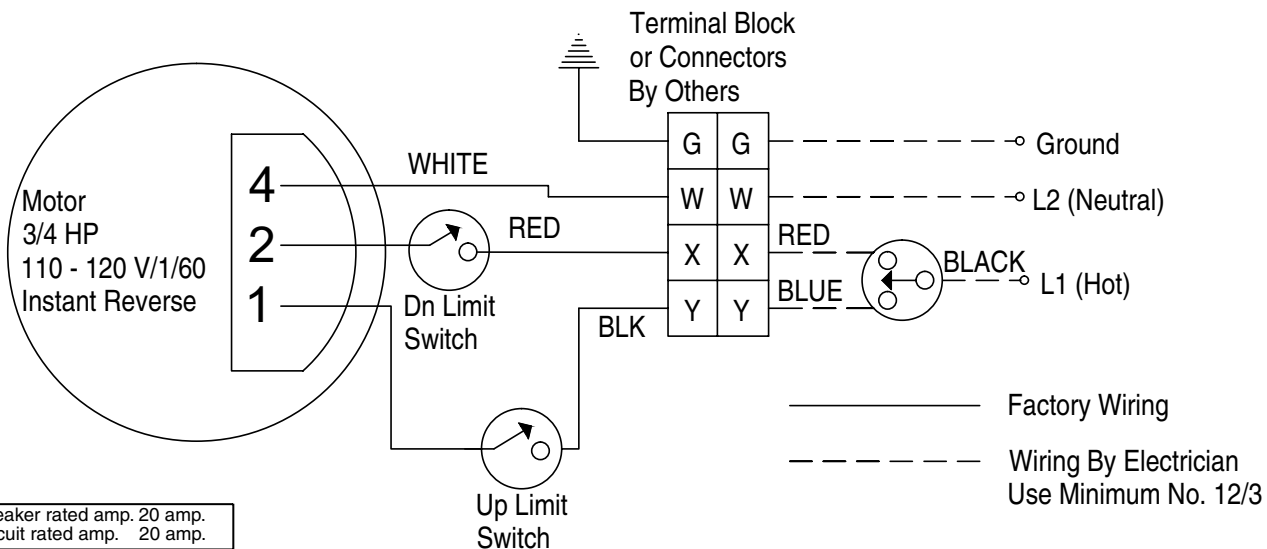


FRONT



TOP

Wiring Diagram



Circuit breaker rated amp. 20 amp.
Fused circuit rated amp. 20 amp.
Minimum Wire Size
90' maximum run. 12 ga.
90' to 140' run. 10 ga.
Over 140'. 8 ga.
Sizes of wall masonry boxes required for single and ganged key switches-- All boxes 2" deep and 4" high.