

# Motorized Steel Height Adjuster

*Electric 8'-10'  
Height Adjuster  
for Basketball  
Backboards*



## **Specifications—Direct Mount 8'-10' Motorized Height Adjuster**

For electric 8'-10' height adjustment for rectangular or fan shaped backboards and goals, featuring a direct goal attachment, specify (503093 / 503096 / 503097 / 503098 / 503099 / 503104 / 503105). The motorized height adjuster is designed to mount to virtually any style of backstop structure. All Draper backboards have a Lifetime Limited Warranty when used with the motorized height adjuster. Height adjuster includes a self-adhesive height scale that is graduated in 1" increments and labeled at 6" intervals. Height scale applied after installation to insure accuracy.

The motorized height adjuster is built with a main frame-assembly constructed of 2" x 2½" x ¼" steel angle and ¼" thick flat steel. Slip tubes consist of 2⅝" O.D. outer tubes and 2¼" O.D. inner tubes. The motorized height adjuster frame assembly is jig welded and factory assembled to ensure precise alignment and smooth operation. The motorized height adjuster is operated via a 115-volt, 1/10 HP, single-phase linear actuator with a 20% duty cycle. Linear actuator motor is rated at 1.4 amps and includes a brake mechanism to ensure against goal height drift. Electric linear actuator provides smooth reversible motion for loads up to 600 lbs. Linear actuator includes cam style limit switches that will allow 24" of travel. The Direct Mount 8'-10' Motorized Height Adjuster is available with standard key switch, wireless remote or power wand operation. Height adjuster features adjustable nylon guide bolts to allow user to minimize movement between slip tubes.

The motorized height adjuster's linear actuator assembly is bolted in place and easily removed for conversion to manual operation.

**503093**—For Motorized 8'-10' height adjustment of rectangular bank.

**503095**—For Motorized 8'-10' height adjustment of rectangular bank with wireless remote control.

**503096**—For Motorized 8'-10' height adjustment of rectangular bank with Stick Power Wand.

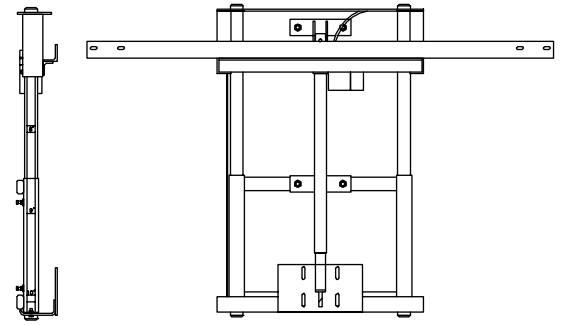
**503097**—For Motorized 8'-10' height adjustment of fan bank.

**503098**—For Motorized 8'-10' height adjustment of fan bank with wireless remote control.

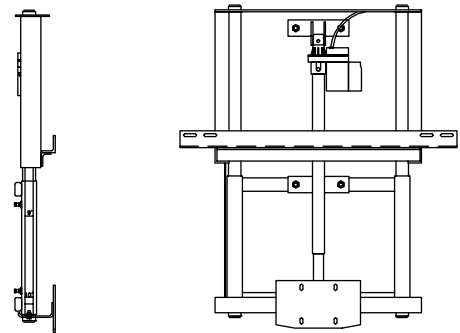
**503099**—For Motorized 8'-10' height adjustment of fan bank with Stick Power Wand.

**503104**—For Motorized 8'-10' height adjustment of rectangular bank with Control System.

**503105**—For Motorized 8'-10' height adjustment of fan bank with Control System.



**Rectangular Bank  
Electric Height Adjuster**



**Fan Bank  
Electric Height Adjuster**

## **Please Mark Appropriate Selections**

### **Select Backboard Mounting Style**

- Fan
  - Glass
  - Fiberglass
  - Aluminum
- Rectangular
  - 42" Glass
  - 42" Wood/Fiberglass
  - 48" Glass
  - 48" Wood/Fiberglass

### **Select Height Adjuster Mounting Style**

- Mount Height Adjuster on Backstop
  - T-Stem Backstop
  - Wall-Mounted Backstop
  - Double Drop Backstop
- Mount Height Adjuster on Wall

### **Select Control Options**

- Key Switch (standard) How Many? \_\_\_\_\_
- Wireless Remote Control
- Power Wand
- Control System

**Please Note: 8'-10' unit is shown for mounting to 6" O.D. stem. Unit can be mounted on any style backstop, or to the wall. The goal mounts to the unit through the backboard and into the goal mounting plate, thus placing less strain on the backboard.**



765-987-7999

866-637-5611

411 S. Pearl St.

Spiceland IN 47385 USA

www.progressivescg.com

PROJECT: \_\_\_\_\_

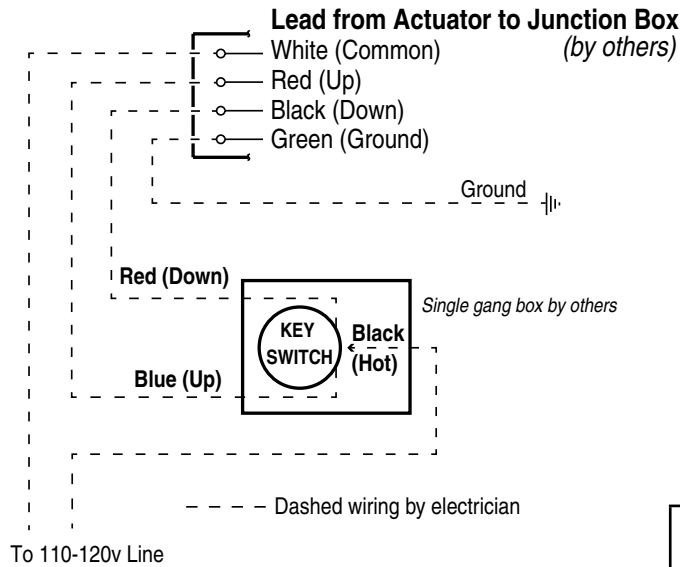
ARCHITECT: \_\_\_\_\_

CONTRACTOR: \_\_\_\_\_

SUPPLIER: \_\_\_\_\_

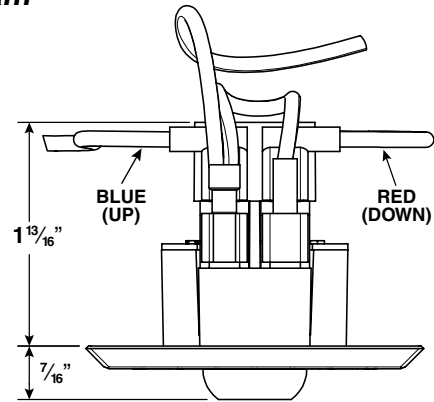
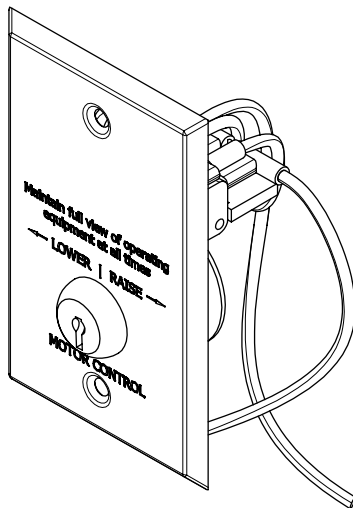
DATE: \_\_\_\_\_ REVISED: \_\_\_\_\_

### Wiring Diagram

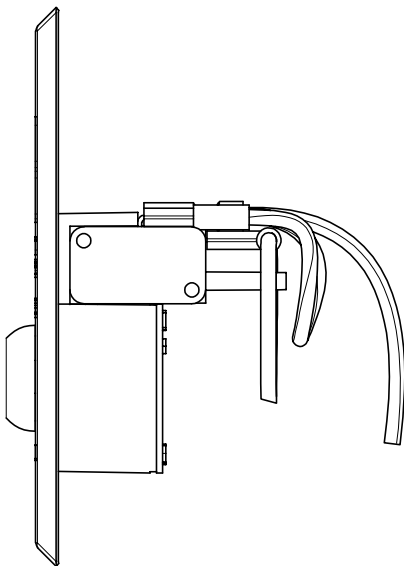


Sizes of wall masonry boxes required for single and ganged key switches-- All boxes 2" deep and 4" high.

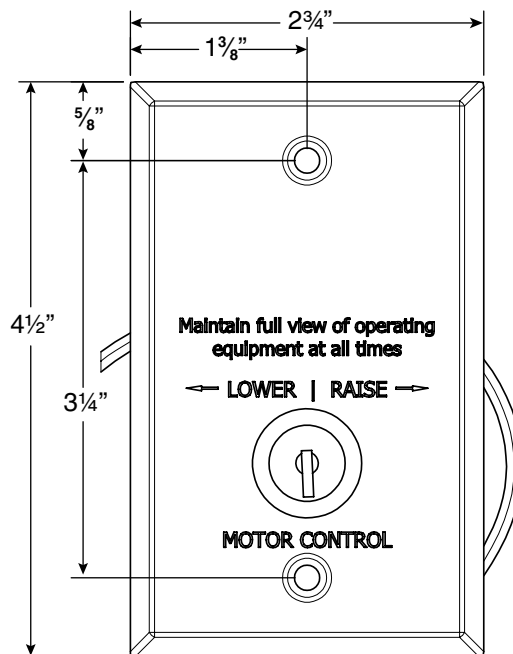
### Key Switch Diagram



TOP



SIDE



FRONT