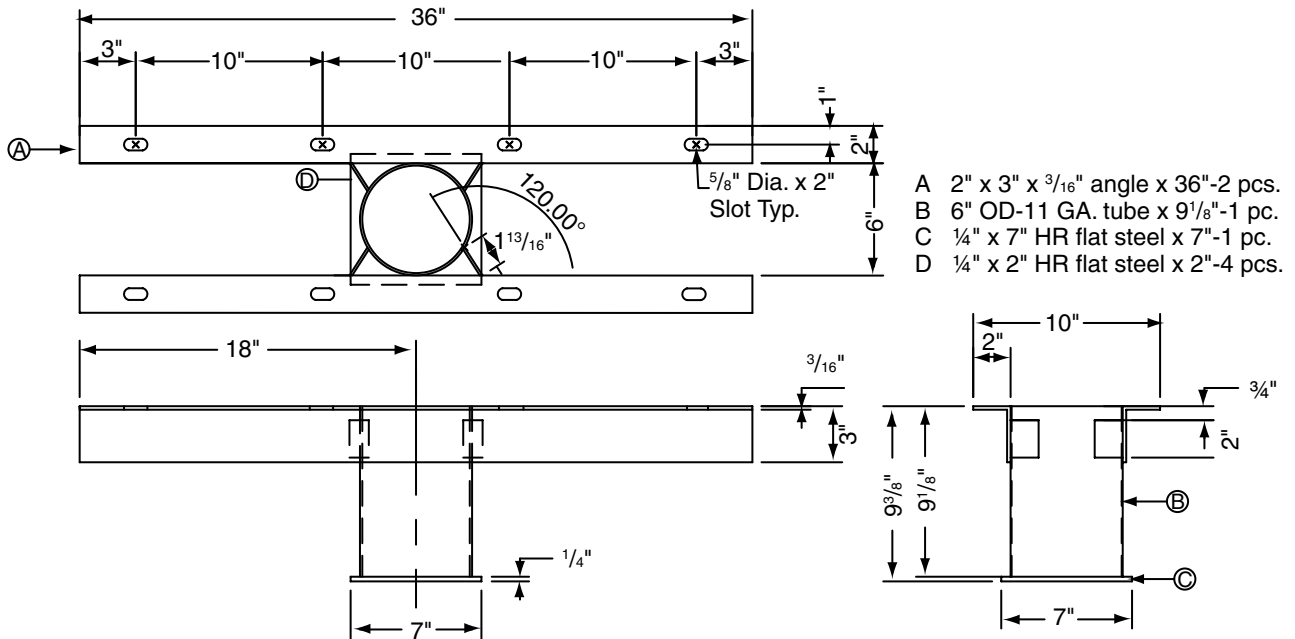


501007

Second Story Floor Sleeve Adapter



Specifications—501007

Second Story Floor Sleeve Adapter

____ Second Story Floor Sleeve Adapter, #501007 by Progressive Sports Construction Group.

Second Story Floor Sleeve adapter shall be designed for use in facilities where volleyball, tennis or badminton floor sleeves must be installed above the ground floor or in a gymnasium over a crawl space. Unit bolts to underside of concrete slab so floor sleeves can be installed in a normal manner. Second story sleeve adaptor shall be of all welded construction and shall consist of 6" OD – 11 Ga. Tubing, 2" x 3" x 3/16" steel angles and 1/4" HR Flat Steel. Second Story Sleeve Adaptor shall be finished with black powder coat paint.



PROJECT: _____

ARCHITECT: _____
CONTRACTOR: _____
SUPPLIER: _____
DATE: _____ REVISED: _____