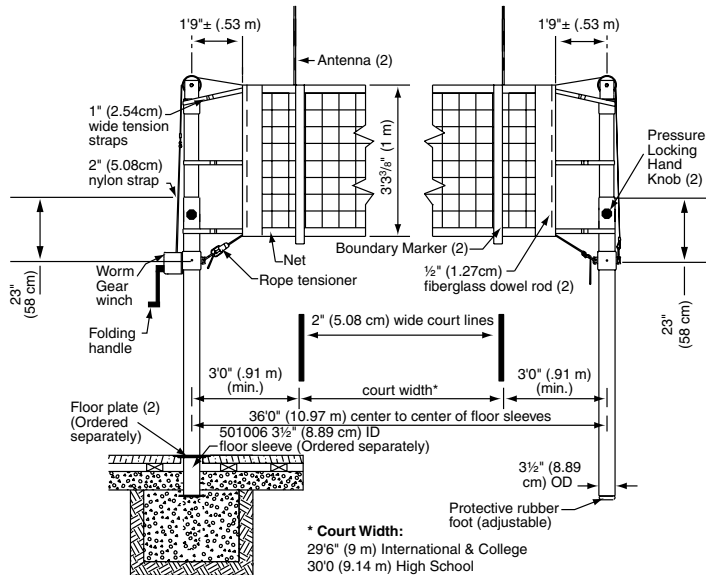


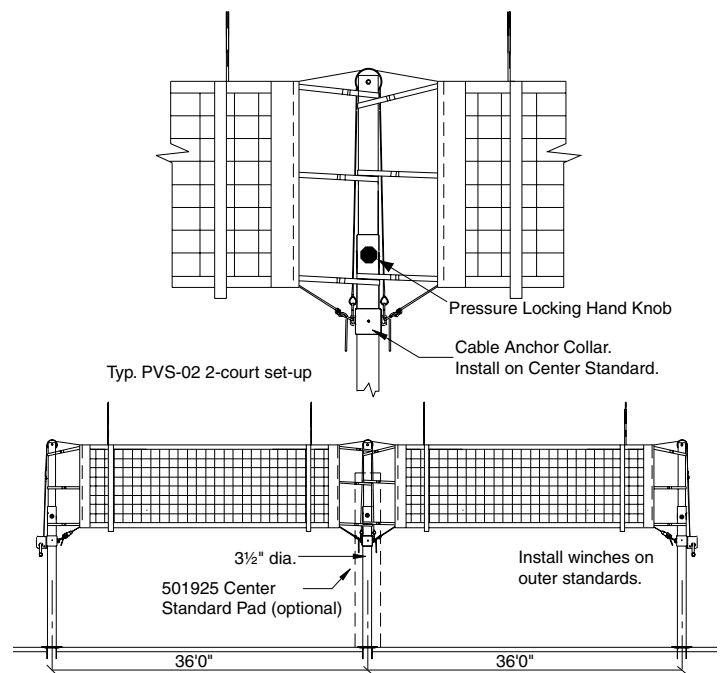
# Elite Volleyball Systems



## 500941 One Court System



## 500942 Two Court System



### Please Mark Appropriate Selections

#### Select Power Volleyball System

- 500941 One Court System (Two-Pole System)
- 500942 Two Court System (Three-Pole System)

**Please Note: Specifications can be found on back page**

### Official Heights for USVBA, NCAA, and NFHS

Volleyball Heights	Girls	Boys
Grades 1-6 (Elem.)	6'1" (1.85m)	6'1" (1.85m)
Grades 7-9 (Middle School)	7'4 1/8" (2.24m)	7'4 1/8" (2.24m)
Grades 7-9 (Jr. High)	7'4 1/8" (2.24m)	7'11 5/8" (2.43m)
Grades 9-12 (Sr. High)	7'4 1/8" (2.24m)	7'11 5/8" (2.43m)
Collegiate & International	7'4 1/8" (2.24m)	7'11 5/8" (2.43m)

Note: Regulation net heights are set at center of net. Ends of net (at court lines) cannot exceed the regulation height by more than 3/4" (2 cm).

Net height is adjustable from 6'1" (1.85 m) to 8'4" (2.54 m) in 1" (2.54 cm) increments.



765-987-7999  
 866-637-5611  
 411 S. Pearl St.  
 Spiceland IN 47385 USA  
[www.progressivescq.com](http://www.progressivescq.com)

PROJECT: \_\_\_\_\_

ARCHITECT: \_\_\_\_\_

CONTRACTOR: \_\_\_\_\_

SUPPLIER: \_\_\_\_\_

DATE: \_\_\_\_\_ REVISED: \_\_\_\_\_

## Specifications—500941

### Two-Pole Elite Volleyball System

#### Product Description

**Volleyball System** shall be One Court Elite Volleyball System, No. 500941 by Progressive Sports Construction Group. Post shall be telescoping type to meet all FIVB, USA Volleyball, NCAA and NFHS requirements for competition. Post shall allow infinite height adjustment from 6' (1.854 m) to 8'4" (2.540 cm) to meet all age group height settings from elementary school use to international competition for both men and women. Elite Volleyball System shall incorporate an internal spring assist mechanism for easy, precise and infinite height adjustments. Elite Volleyball System easily locks in place with a pressure lock hand knob and post is clearly marked at normal competition heights. Clear anodized finish for professional looking appearance.

The 6' (1.890 cm) bottom upright shall be 3½" O.D. (8.890 cm) schedule 80 aluminum tube, with a wall thickness of .300" (.7620 cm). The bottom upright is provided with a special rubber foot to protect finished floors and to provide precise net height adjustment.

The upper telescoping adjustable tube shall be 2⅞" O.D. (7.303 cm) schedule 80 aluminum tube, with a wall thickness of .300" (.7620 cm).

The tensioning winch shall incorporate a heavy-duty, self-locking worm gear mechanism. Winch shall be furnished with a heavy 2" (5 cm) wide high tensile nylon strap with heavy-duty snap hook to eliminate the possibility of hook breaking and guarantee safe connection to net top cable. The winch is furnished complete with a folding handle for player safety.

Secure cast-in-place 3½" I.D. floor sleeves with flush cover plates provide rigid support—for the life of the installation.

The 500941 Elite Volleyball System shall consist of one telescoping standard with winch and one telescoping standard with adjustable cable anchor collar.

**Volleyball Net** shall be #500004 by Progressive Sports Construction Group. Net shall be 32' (9.75 M) long x 39⅜" (1 M) high. Netting shall be high quality 4" square #36 black nylon cord with vinyl coated polyester hem double stitched around entire perimeter of net. Top hem of net shall be furnished with a 42'6" long x 1/8" diameter 2000 lb. minimum breaking strength galvanized aircraft cable with a nylon coating (3/16" O.D.) to protect against fraying. Ends of cable to have loops with heavy swaged type fittings for easy installation. Hems in end of net shall be furnished with a pocket for use with a ½" diameter fiberglass dowel rod. Ends of net shall have six 1" wide polypropylene tension straps with buckles for providing additional tightening of net. Bottom of net shall be furnished with a ¼" diameter braided white nylon rope equipped with a spring loaded, pressure type rope tensioner.

**Rope Tensioner** shall be #500005 by Progressive Sports Construction Group.

**Combination Antenna and Boundary Marker** shall be #500016 by Progressive Sports Construction Group.

**Optional Protective Pads** shall provide maximum player protection. Two, 5'8" high pads are constructed of 1½" thick, cross-linked polyethylene foam covered with polyester reinforced vinyl fabric. Dark blue is standard; other colors available.

#### STANDARD DIMENSIONS

36'0" center to center of standards/sleeves.

## Specifications—500942

### Three-Pole Elite Volleyball System

#### Product Description

**Volleyball System** shall be Two Court Elite Volleyball System, No. 500942 by Progressive Sports Construction Group. Post shall be telescoping type to meet all FIVB, USA Volleyball, NCAA and NFHS requirements for competition. Post shall allow infinite height adjustment from 6' (1.854 m) to 8'4" (2.540 cm) to meet all age group height settings from elementary school use to international competition for both men and women. Elite Volleyball System shall incorporate an internal spring assist mechanism for easy, precise and infinite height adjustments. Elite Volleyball System easily locks in place with a pressure lock hand knob and post is clearly marked at normal competition heights. Clear anodized finish for professional looking appearance.

The 6' (1.890 cm) bottom upright shall be 3½" O.D. (8.890 cm) schedule 80 aluminum tube, with a wall thickness of .300" (.7620 cm). The bottom upright is provided with a special rubber foot to protect finished floors and to provide precise net height adjustment.

The upper telescoping adjustable tube shall be 2⅞" O.D. (7.303 cm) schedule 80 aluminum tube, with a wall thickness of .300" (.7620 cm).

The tensioning winch shall incorporate a heavy-duty, self-locking worm gear mechanism. Winch shall be furnished with a heavy 2" (5 cm) wide high tensile nylon strap with heavy-duty snap hook to eliminate the possibility of hook breaking and guarantee safe connection to net top cable. The winch is furnished complete with a folding handle for player safety.

Secure cast-in-place 3½" I.D. floor sleeves with flush cover plates provide rigid support—for the life of the installation.

The 500942 Elite Volleyball System shall consist of two standards with winch and adjustable cable anchor collar, and 501925 center standard.

**Volleyball Nets** shall be #500004 by Progressive Sports Construction Group. Net shall be 32' (9.75 M) long x 39⅜" (1 M) high. Netting shall be high quality 4" square #36 black nylon cord with vinyl coated polyester hem double stitched around entire perimeter of net. Top hem of net shall be furnished with a 42'6" long x 1/8" diameter 2000 lb. minimum breaking strength galvanized aircraft cable with a nylon coating (3/16" O.D.) to protect against fraying. Ends of cable to have loops with heavy swaged type fittings for easy installation. Hems in end of net shall be furnished with a pocket for use with a ½" diameter fiberglass dowel rod. Ends of net shall have six 1" wide polypropylene tension straps with buckles for providing additional tightening of net. Bottom of net shall be furnished with a ¼" diameter braided white nylon rope equipped with a spring loaded, pressure type rope tensioner.

**Rope Tensioner** shall be #500005 by Progressive Sports Construction Group.

**Combination Antenna and Boundary Marker** shall be #500016 by Progressive Sports Construction Group.

**Optional Protective Pads** shall provide maximum player protection. Two, 5'8" high pads are constructed of 1½" thick, cross-linked polyethylene foam covered with polyester reinforced vinyl fabric. Dark blue is standard; other colors available.

#### STANDARD DIMENSIONS

36'0" center to center of standards/sleeves (each court).

#### LEED® Submittal Information

Credit	Measure	
MRc4 – Recycled Content	Post Consumer Average 42.8%	Post Industrial 0%
MRc5 – Regional Materials	Product Manufactured in Spiceland, IN 47385	