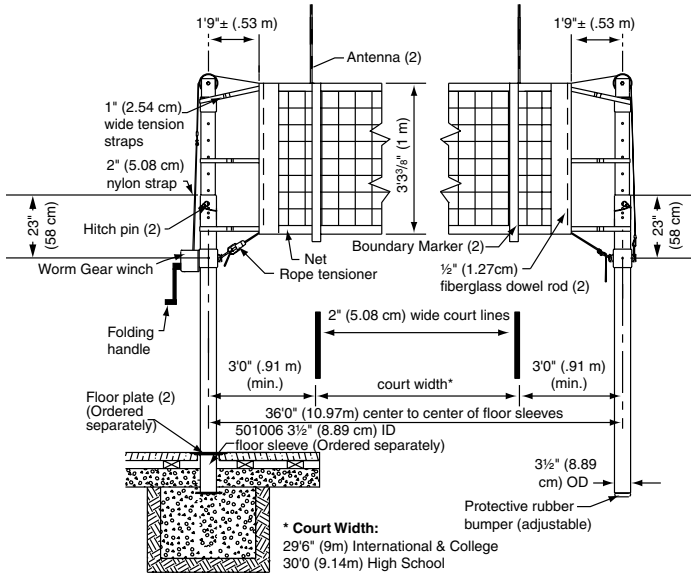


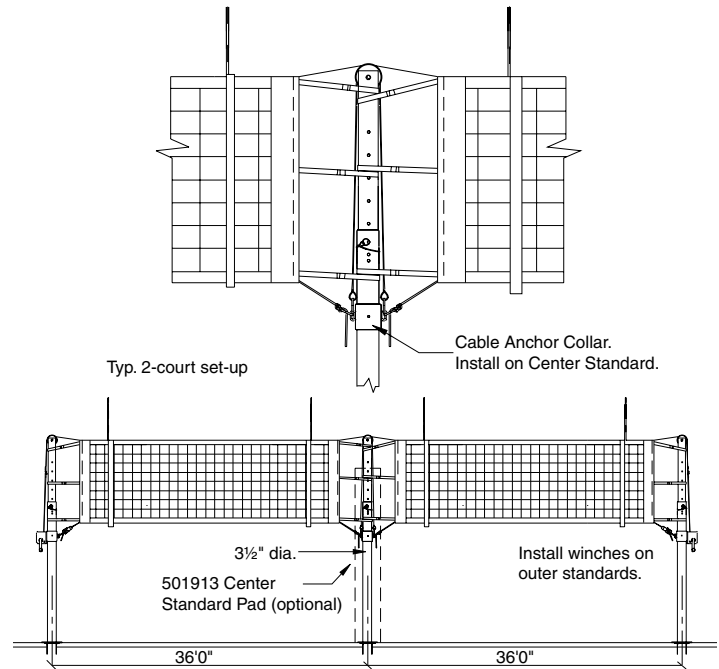
# Power Volleyball Systems



## 500901 One Court System



## 500902 Two Court System



### Please Mark Appropriate Selections

#### Select Power Volleyball System

- 500901 One Court System
- 500902 Two Court System

Please Note: Specifications can be found on back page

### Official Heights for USVBA, NCAA, and NFHS

Volleyball Heights	Girls	Boys
Grades 1-6 (Elem.)	6'1" (1.85m)	6'1" (1.85m)
Grades 7-9 (Middle School)	7'4 1/8" (2.24m)	7'4 1/8" (2.24m)
Grades 7-9 (Jr. High)	7'4 1/8" (2.24m)	7'11 5/8" (2.43m)
Grades 9-12 (Sr. High)	7'4 1/8" (2.24m)	7'11 5/8" (2.43m)
Collegiate & International	7'4 1/8" (2.24m)	7'11 5/8" (2.43m)

Note: Regulation net heights are set at center of net. Ends of net (at court lines) cannot exceed the regulation height by more than 3/4" (2 cm).

Net height is adjustable from 6'1" (1.85 m) to 8'4" (2.54 m) in 1" (2.54 cm) increments.



PROJECT: _____	
ARCHITECT: _____	
CONTRACTOR: _____	
SUPPLIER: _____	
DATE: _____	REVISED: _____

## Specifications—500901

### Two-Pole Power Volleyball System

#### Product Description

**Volleyball System** shall be One Court Power Volleyball System, No. 500901 by Progressive Sports Construction Group. Post shall be telescoping type to meet all FIVB, USA Volleyball, NCAA and NFHS requirements for competition. Post shall adjust from 6'1" (1.854 m) to 8'4" (2.540 m) in 1" (2.540 cm) increments to meet all age group height settings from elementary school use to international competition for both men and women.

The 6' (1.890 cm) bottom upright shall be 3½" OD (8.890 cm) schedule 80 aluminum tube, with a wall thickness of .300" (.7620 cm). The bottom upright is provided with a special rubber foot to protect finished floors and to provide precise net height adjustment.

The upper telescoping adjustable tube shall be 27/8" OD (7.303 cm) schedule 80 aluminum tube, with a wall thickness of .276" (.7010 cm) with a 4" (10.16 cm) diameter pulley and oilite bushing.

The tensioning winch shall incorporate a heavy-duty, self-locking worm gear mechanism. Winch shall be furnished with a heavy 2" (5 cm) wide high tensile nylon strap with heavy-duty snap hook to eliminate the possibility of hook breaking and guarantee safe connection to net top cable. The power winch is furnished complete with a folding handle for player safety.

The 500901 One Court System shall consist of one standard with power winch and one standard with adjustable cable anchor collar.

**Power Volleyball Net** shall be #500004 by Progressive Sports Construction Group. Net shall be 32' (9.75 M) long x 39¾" (1 M) high. Netting shall be high quality 4" square #36 black nylon cord with vinyl coated polyester hem double stitched around entire perimeter of net. Top hem of net shall be furnished with a 42'6" long x 1/8" diameter 2000 lb. minimum breaking strength galvanized aircraft cable with a nylon coating (3/16" OD) to protect against fraying. Ends of cable to have loops with heavy swaged type fittings for easy installation. Hems in end of net shall be furnished with a pocket for use with a ½" diameter fiberglass dowel rod. Ends of net shall have six 1" wide polypropylene tension straps with buckles for providing additional tightening of net. Bottom of net shall be furnished with a ¼" diameter braided white nylon rope equipped with a spring loaded, pressure type rope tensioner.

**Rope Tensioner** shall be #500005 by Progressive Sports Construction Group.

**Combination Antenna and Boundary Marker** shall be #500016 by Progressive Sports Construction Group.

#### STANDARD DIMENSIONS

36'0" center to center of standards/sleeves.

## Specifications—500902

### Three-Pole Power Volleyball System

#### Product Description

**Volleyball System** shall be Two Court Power Volleyball System, No. 500902 by Progressive Sports Construction Group. Post shall be telescoping type to meet all FIVB, USA Volleyball, NCAA and NFHS requirements for competition. Post shall adjust from 6'1" (1.854 m) to 8'4" (2.540 m) in 1" (2.540 cm) increments to meet all age group height settings from elementary school use to international competition for both men and women.

The 6' (1.890 cm) bottom upright shall be 3½" OD (8.890 cm) schedule 80 aluminum tube, with a wall thickness of .300" (.7620 cm). The bottom upright is provided with a special rubber foot to protect finished floors and to provide precise net height adjustment.

The upper telescoping adjustable tube shall be 27/8" OD (7.303 cm) schedule 80 aluminum tube, with a wall thickness of .276" (.7010 cm) with a 4" (10.16 cm) diameter pulley and oilite bushing.

The tensioning winch shall incorporate a heavy-duty, self-locking worm gear mechanism. Winch shall be furnished with a heavy 2" (5 cm) wide high tensile nylon strap with 3/8" (.9526 cm) sling ring and heavy-duty snap hook to eliminate the possibility of hook breaking and guarantee safe connection to net top cable. Winch system cables which wrap and kink on the winch drum will not be accepted as equal. The power winch is furnished complete with a folding handle for player safety.

The 500902 Two Court System shall consist of two standards with power winch and adjustable cable anchor collar, and 501913 center standard.

**Power Volleyball Nets** shall be #500004 by Progressive Sports Construction Group. Net shall be 32' (9.75 M) long x 39¾" (1 M) high. Netting shall be high quality 4" square #36 black nylon cord with vinyl coated polyester hem double stitched around entire perimeter of net. Top hem of net shall be furnished with a 42'6" long x 1/8" diameter 2000 lb. minimum breaking strength galvanized aircraft cable with a nylon coating (3/16" OD) to protect against fraying. Ends of cable to have loops with heavy swaged type fittings for easy installation. Hems in end of net shall be furnished with a pocket for use with a ½" diameter fiberglass dowel rod. Ends of net shall have six 1" wide polypropylene tension straps with buckles for providing additional tightening of net. Bottom of net shall be furnished with a ¼" diameter braided white nylon rope equipped with a spring loaded, pressure type rope tensioner.

**Rope Tensioner** shall be #500005 by Progressive Sports Construction Group.

**Combination Antenna and Boundary Marker** shall be #500016 by Progressive Sports Construction Group.

#### STANDARD DIMENSIONS

36'0" center to center of standards/sleeves (each court).

#### LEED® Submittal Information

Credit	Measure	
MRc4 – Recycled Content	Post Consumer Average 42.8%	Post Industrial 0%
MRc5 – Regional Materials	Product Manufactured in Spiceland, IN 47385	